

Canon

imageRUNNER®
2016 / 2020 SERIES



WORKGROUP
SYSTEMS



imageRUNNER®
2016/2020 SERIES

WORKGROUP SYSTEMS

HIGH-END PRODUCTIVITY COMES TO LOW VOLUME

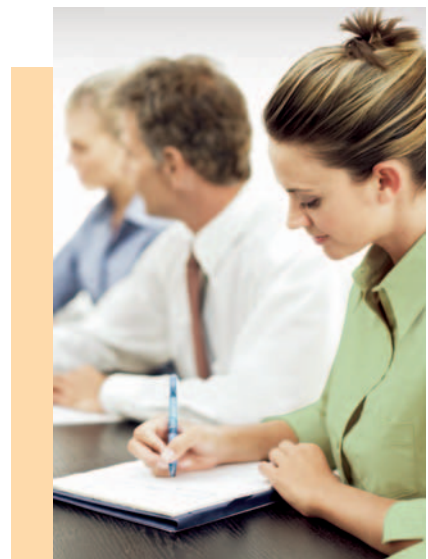
Powerful Canon Systems
Designed to Help Every Business
Produce Documents and Share
Information Efficiently.



The advantages of digital multifunction technology are more apparent than ever before. You need a solution to meet the daily challenges faced in an increasingly sophisticated communications environment.

Introducing four new choices for busy workgroups and small businesses from Canon—the imageRUNNER® 2016/2020 and the imageRUNNER 2016i/2020i. Producing laser-sharp output at speeds of up to 16 and 20 pages per minute, respectively, these compact imageRUNNER devices can deliver the benefits of digital copy, network print, and fax features, along with innovative technologies that will help your business save time, space, and most of all, document production and distribution costs.

So whether you're a growing company or a corporate workgroup stretched to capacity, Canon has the tools you need to create and distribute the information that fuels your business.



MULTIFUNCTION CONVENIENCE IN A COMPACT DESIGN

Versatile and expandable, the imageRUNNER 2016/2020 base models allow you to build a system to meet your business needs.

imageRUNNER 2016/2020

Simple to program and maintain, the imageRUNNER 2016/2020 base models ensure that each document is reproduced with accuracy. Every original is scanned at 600 dpi for copies that are amazingly faithful to the original. A host of image and document manipulation features can be accessed through the user-friendly control panel, making it easy to produce professional-looking documents the first time, every time. And to ensure that users are not kept waiting to make copies, Canon's RAPID Fusing System™ helps speed warm-up times while keeping energy consumption costs to a minimum.

Productive Network Printing

With their standard USB 2.0 and 10/100Base-TX Ethernet interfaces, the imageRUNNER 2016/2020 devices are easy-to-use printers that provide users with complete access to available paper supplies and finishing modes. Printed pages are output at true 1200 x 1200* dpi print resolution to ensure superior image quality. Canon's innovative Ultra Fast Rendering (UFR II LT) printing technology comes standard to provide fast document processing, plus there's optional support for PCL 5e/6 page description languages. An optional duplexing unit provides two-sided printing, so you can save paper costs too.

Super-Fast Faxing

Configure your imageRUNNER 2016/2020 devices with the optional Super G3 Fax Board to handle all your faxing needs. Users have access to one-touch speed-dial keys, a high-capacity address book, and a host of memory features that expedite your work. Plus, Canon's fax driver allows employees to fax documents from their computers for ultimate efficiency.

Considerable Configuration Flexibility

Besides allowing you to copy, print, and fax documents, the imageRUNNER 2016/2020 models provide easy maintenance and extensive document-handling options. High-yielding supplies and consumables help keep running costs and downtime to a minimum for top-notch efficiency. You can take advantage of an optional 50-sheet Duplexing Automatic Document Feeder to relieve document handling chores. For lengthy job runs, each model can be equipped with up to five paper sources and support a maximum paper capacity of up to 1,080 sheets. The imageRUNNER 2016/2020 models also support a range of integrated output options that neatly collate and provide stapled document sets for immediate distribution.

Paper Supply



Inner Two-Way Tray



Finisher-U1 with Additional Finisher Tray



* Canon UFR II LT only. Requires 256MB RAM.

EVERY DOCUMENT REPRESENTS THE IMAGE OF YOUR BUSINESS...MAKE EVERY ONE COUNT

Whether you're working with hard copies or electronic files, you'll make a great impression with the advanced imageRUNNER 2016i/2020i models.

imageRUNNER 2016i/2020i

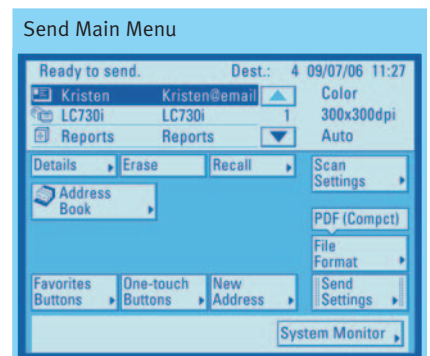
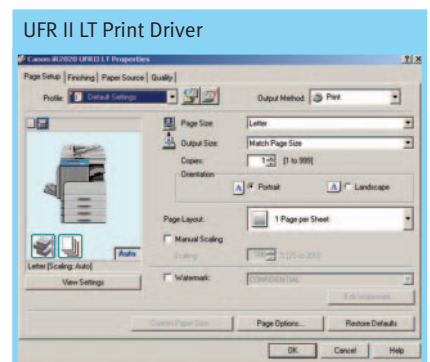
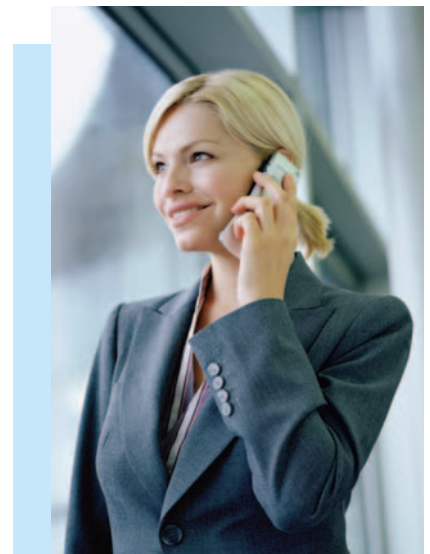
The advanced imageRUNNER 2016i/2020i models build upon all the capabilities of the imageRUNNER 2016/2020 base devices, offering automatic duplexing and document feeding, a large LCD touch-screen user interface, expanded memory capacities, and PCL printing as standard. But the imageRUNNER 2016i/2020i devices go even further to support full-color send capabilities, so you can streamline costs and improve communications.

Powerful Document Distribution—In Color!

Take advantage of your network infrastructure and speed your business communications with the imageRUNNER 2016i/2020i models' powerful suite of black-and-white and full-color document distribution capabilities. Scan and send documents to individual or group e-mail addresses, to a file folder on a network or desktop, or as an I-fax over the Internet in one time-saving step. You'll streamline costs and save time by sending documents to multiple destinations instantly in popular PDF, TIFF, or JPEG file formats. And, with Canon's innovative PDF High Compression Mode, you don't need to worry about full-color documents clogging your network. This feature minimizes file sizes while maintaining image quality, so you and your recipients can easily work with scanned color documents.

Easy To Manage

Canon provides a complete set of device management and monitoring utilities embodied in the NetSpot® Suite. Plus, every imageRUNNER system is bundled with Canon's browser-based Remote UI™ utility to provide real-time system monitoring and status information, so every user can make intelligent decisions right from the desktop. And, with their energy-saving features, the imageRUNNER 2016/2020 Series devices are ENERGY STAR® qualified systems.



INTRODUCING A PAIR OF BASIC DIGITAL MFPs AND THEIR ULTRAMODERN COUNTERPARTS

imageRUNNER 2016/2020

The imageRUNNER 2016/2020 base models deliver digital copying, network printing, and optional faxing to meet the needs of small workgroups requiring basic yet expandable functionality.



imageRUNNER 2016/2020 Control Panel



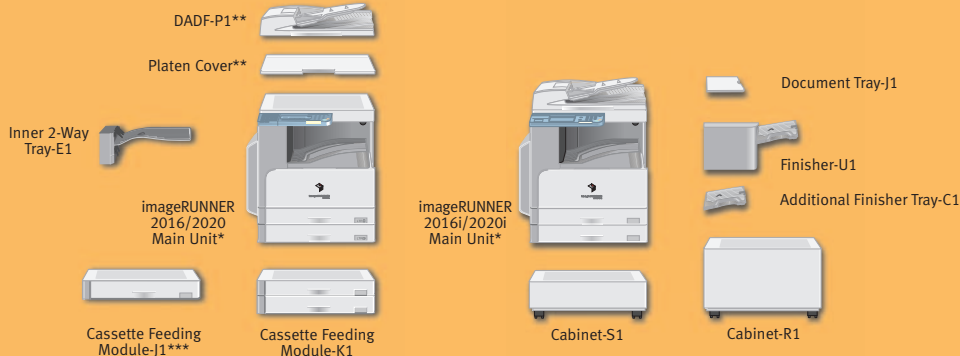
imageRUNNER 2016i/2020i Control Panel

imageRUNNER 2016i/2020i

For more sophisticated users, the advanced imageRUNNER 2016i/2020i models build upon the capabilities of the base models to provide fully-integrated color communication features and a complete suite of functionality.

Feature	imageRUNNER 2016/2020	imageRUNNER 2016i/2020i
Memory Capacity (Standard/Maximum)	128MB/256MB	256MB/256MB
Copy	Standard	Standard
Print	Standard (Canon UFR II LT) Optional (PCL)	Standard (Canon UFR II LT /PCL)
Fax	Optional	Optional
Color Send	NA	Standard
Document Feeder	Optional	Standard
Duplexing	Optional	Standard

All models ship standard with USB 2.0 and 10/100Base-TX Ethernet connectivity.



imageRUNNER® 2016/2020 SERIES

imageRUNNER 2016/2016i/2020/2020i Specifications

Type:	Digital Multifunction Imaging System
Imaging System:	Laser Dry Electrostatic Transfer
Developing System:	Dry Single-Component Projection
Fixing System:	RAPID Fusing System
Image Server Memory (Std./Max.):	
2016/2020:	128MB/256MB RAM
2016i/2020i:	256MB/256MB RAM
First-Copy-Out Time:	7.9 Seconds from Platen Glass
	13.5 Seconds from Feeder
Warm-Up Time:	1 Second or Less from Sleep Mode†
	13 Seconds or Less from Main Power Off†
Copy/Print Speed	
2016/2016i:	Up to 16 ppm (Letter)
2020/2020i:	Up to 20 ppm (Letter)
Maximum Original Size:	11" x 17"
Maximum Copy Size:	11" x 17"
Minimum Copy Size:	3-3/4" x 5-7/8"
Acceptable Originals:	Sheets, Books, and 3-Dimensional Items (Up to 4-3/8 lb.)
Multiple Copies:	1 to 99
Max. Copy Reservation:	5 Jobs
Scan Resolution:	600 x 600 dpi
Copy Resolution (Enhanced):	1200 x 600 dpi
Print Resolution	
2016/2020:	600 x 600 dpi (Std.)
	1200 x 1200 dpi (Opt)††
2016i/2020i:	1200 x 1200 dpi (Std.)††
	256 Levels
Halftone:	
Automatic Trayless Duplexing	
2016/2020:	Optional
2016i/2020i:	Standard
Magnification:	50% to 200% (In 1% Increments)
Preset Reduction:	50%, 64%, 73%, 78%
Preset Enlargement:	121%, 129%, 200%
Exposure Control:	Automatic or Manual (9 Levels)
Document Feeding	
2016/2020:	Optional 50-Sheet DADF
2016i/2020i:	Standard 50-Sheet DADF
Standard Paper Capacity	
2016/2016i:	1 x 250+80 Bypass (Total 330 Sheets)
2020/2020i:	2 x 250+80 Bypass (Total 580 Sheets)
Maximum Paper Capacity:	1,080 Sheets
Acceptable Paper Weight:	17 lb. to 24 lb. Bond (Cassette) 17 lb. to 32 lb. Bond (Bypass)
Power Requirements:	120V AC, 60Hz, 4.6A
Power Consumption:	1.55kW (Max.)
Toner Yield:	8,300 @ 6% Coverage
Printing Specifications	
CPU:	Canon Custom Processor—Shared
Memory	
2016/2020:	Shared with Main Unit—128MB Std./256MB Max. (with PCL Printer Kit-J1)
2016i/2020i:	Shared with Main Unit—256MB Std.

PDL Support	
2016/2020:	UFR II LT (Std.) PCL 5e/6 (Opt. with PCL Printer Kit-J1) UFR II LT, PCL 5e/6 (Std.) 10/100Base-TX (RJ-45), USB 2.0 High Speed
2016i/2020i:	Novell® NetWare® v. 5.1, 6, 6.5††† Windows® 98/Me Windows NT® 4.0/2000/XP/Server 2003 (TCP/IP) Apple® Macintosh® OS X or Higher*
Standard Interfaces:	
Network Operating Systems:	
Send Capabilities**	
Sending Methods:	E-Mail, I-Fax, Super G3 Fax (Opt.), File Server (FTP, SMB) 500 Destinations
One-Touch Buttons:	
File Formats	TIFF, PDF
Black and White:	JPEG, PDF Compact
Color:	Statement to 11" x 17"
Sending Sizes:	
Accessories	
Duplexing Automatic Document Feeder-P1**	
Paper Capacity:	50 Sheets (Letter, Letter-R, Statement)
Acceptable Original Sizes:	Statement to 11" x 17"
Acceptable Paper Weights:	10 lb. to 32 lb. Bond (One Sheet) 14 lb. to 28 lb. Bond (Multiple Sheets) 20 Sheets/Minute (Letter)
Document Scanning Speed:	
Cassette Feeding Module-J1 (Optional)***	
Paper Capacity:	1 x 250-Sheet Paper Cassette
Acceptable Paper Size:	11" x 17", Legal, Letter, Letter-R, Statement
Acceptable Paper Weight:	17 lb. to 24 lb. Bond
Cassette Feeding Module-K1 (Optional)	
Paper Capacity:	2 x 250-Sheet Paper Cassettes
Acceptable Paper Size:	11" x 17", Legal, Letter, Letter-R, Statement
Acceptable Paper Weight:	17 lb. to 24 lb. Bond
Inner 2-Way Tray-E1 (Optional)	
Number of Trays:	Two
Acceptable Paper Size:	Statement to 11" x 17"
Tray Capacity	
Upper Output Tray:	100 Sheets (Letter) 50 Sheets (Other Sizes)
Lower Output Tray:	250 Sheets (Letter) 100 Sheets (Other Sizes)
Finisher-U1 (Optional)	
Number of Trays:	One (Second Tray Optional)

Tray Capacity	
Single Tray:	770 Sheets (Letter/Statement-R) 380 Sheets (Legal, Letter-R, 11" x 17")
With Additional Finisher Tray-C1:	200 Sheets Each Tray (Letter/Statement-R) 150 Sheets Each Tray (Legal, Letter-R, 11" x 17")
Staple Position/Size:	Corner Stapling (Letter, Letter-R, Legal, 11" x 17")
Max. Stapling Capacity:	Up to 30 Sheets (Letter-R, Legal, 11" x 17")
Attachable Accessories:	Optional Additional Finisher Tray-C1
Super G3 Fax Board-T1 (Optional)	
Applicable Line:	Public Switched Telephone Network (PSTN), Facsimile Network One
Connection Lines:	
One-Touch Buttons	
2016/2020:	200 Destinations
2016i/2020i:	500 Destinations
Sending/Original Sizes:	Statement to 11" x 17"
Recording/Printing Sizes:	Statement to 11" x 17"
Additional Supplies and Accessories	
Additional Finisher Tray-C1	
AXIS 1650 Print Server	
Basic Card Set	
Braille Label Kit-A1	
Cabinet-R1 (Large)	
Cabinet-S1 (Small)	
Card Reader Attachment-D1	
Card Reader-E1	
Copy Card Sets	
Document Tray-J1	
Serial Interface Board-A1*	
Stamp Ink Cartridge-B1	
Staple Cartridge-J1	
Options for imageRUNNER 2016/2020 only	
Duplex Unit-A1	
Fax Panel-A1	
PCL Printer Kit-J1	
Platen Cover	
<small>* Standard configuration of the imageRUNNER 2020/2020i shown; the imageRUNNER 2016/2016i devices ship standard with one paper cassette.</small>	
<small>** Standard on imageRUNNER 2016i/2020i; optional on imageRUNNER 2016/2020.</small>	
<small>*** Option for imageRUNNER 2016/2020i only.</small>	
<small>† At room temperature of 20°C/68°F.</small>	
<small>†† UFR II LT only. Requires 256MB RAM.</small>	
<small>††† Requires AXIS 1650 Print Server.</small>	
<small>* Available in 1Q 2006.</small>	
<small>** Standard on imageRUNNER 2016i/2020i only.</small>	



1-800-OK-CANON
www.usa.canon.com

Canon U.S.A., Inc.
One Canon Plaza
Lake Success, NY 11042

As an ENERGY STAR® Partner, Canon U.S.A., Inc. has determined that these products meet the ENERGY STAR guidelines for energy efficiency. ENERGY STAR and the ENERGY STAR mark are registered U.S. marks. Novell and NetWare are registered trademarks of Novell, Inc. in the United States and other countries. Windows and Windows NT are registered trademarks of Microsoft Corporation in the United States and/or other countries. Apple and Macintosh are registered trademarks of Apple Computer, Inc. Canon, IMAGERUNNER, and NetSpot are registered trademarks, and the GENUINE logo is a trademark of Canon Inc. in the United States and may also be registered trademarks or trademarks in other countries. Remote UI and IMAGEANYWARE are trademarks of Canon U.S.A., Inc. All other referenced product names and other marks are trademarks of their respective owners. All specifications are subject to change without notice. Machines shown with optional accessories/equipment. Check with your local Authorized Canon Dealer for availability. ©2005 Canon U.S.A., Inc. All rights reserved.

0055W913
1005-2016/2020-50M-PGK



PRINTED ON RECYCLED
PAPER IN THE U.S.A.

